



HTL 3207



PRODUCTIVITY & PRECISION

- > Hydrostatic transmission & inching pedal
- > Outstanding outreach capacity
- > Simultaneous & proportional control for movement (flowsharing option)
- > Semi-automatic wheels alignment

COMPACT & COMFORT

- > Lowest height of the HTL Range
- > Short turning radius
- > Driving position, reducing fatigue at work
- > Ergonomic and intuitive cab

EASY TO USE AND MAINTAIN

- > Easy access to all components
- > Smart control 4 in 1 joystick
- > Quick LMS (Load Management System) calibration



PLACING
HEIGHT
7 M



MAXIMUM LIFT
CAPACITY
3200 KG

HTL 3207

TELEHANDLERS

PERFORMANCES

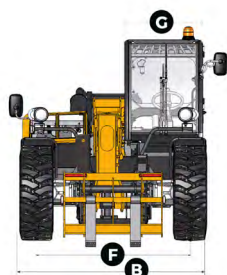
Maximum lift capacity	3200 kg
Lift capacity to full height	2500 kg
Lift capacity at full reach	1300 kg
Maximum fork height	6.85 m
Reach at maximum fork height	0.85 m
Maximum forward reach	3.8 m

DIMENSIONS

A Length	4.67 m
B Width	2.26 m
C Height	2.33 m
D Wheelbase	2.78 m
E Ground clearance	37 cm
F Track width	1.88 m
G Cab width	0.96 m
I Height to high boom pivot	1.6 m
J Approach angle	30 °
K Upper rotation of forks	18 °
L Lower rotation of forks	104 °
Turning radius (outside wheels)	3.7 m
Weight with forks	7030 kg
Tyres type	405 / 70 - 20

ENGINES

Engine model	PERKINS - Tier III - Stage 3A	KOHLER - Tier IV Final - Stage 3B
Engine Capacity	4400 cm ³	3400 cm ³
Engine power output	70 kW / 94 hp @ 2300 rpm	55.4 kW / 75 hp @ 2200 rpm
Engine torque	392 Nm @ 1400 rpm	375 Nm @ 1400 rpm
Transmission type	Hydrostatic transmission	
Fuel tank	120 l	120 l
Engine oil	7 l	15 l



STANDARD EQUIPMENT

- > Hydrostatic transmission
- > ROPS / FOPS cabin with heating and ventilation
- > Cut-off of dangerous movements when overloaded
- > Possibility to combine mast, telescopic boom, excavation and accessories movements
- > Safety valves on hydraulic jacks
- > Gear equipment pump
- > 4 wheel drive and steer
- > Backlighted e-tronic dashboard

OPTIONS AND ACCESSORIES

- > Electrically hydraulic controls
- > Different types of tires
- > Working lights
- > Rear camera or sensor
- > Air conditioning
- > Metal windscreen protection
- > Cold, hot environment or biodegradable oil
- > Buckets
- > Grabs
- > Jibs
- > Winches

